

TEXTURES & FILLERS

HARD COATINGS

Textures for Styrofoam and Polystyrene Versatile water-based fibre-reinforced coatings for Styrofoam and polystyrene. Application with a trowel is best but they can be diluted with water up to 5% to be applied with a brush; or up to 15% to be applied using Airless Spray Equipment [see page 94]. Clean immediately after use with water. Can be tinted using up to 8% Rosco Supersaturated Paint [page 12]. Very strong. See Page 71 for other Haussmann Coatings.



Haussmann's Foam Armour 1075 An good value foam coating - an excellent choice if you have to cover a large area. Consumption: Undiluted allow around 1 - 1.8 kg per m².
 ✓ Economical

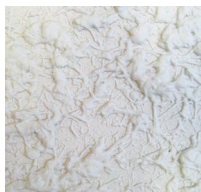


Haussmann's Foam Armour Light 1080 This coating uses a new ultra-lightweight mineral extender to reduce weight. When applied to Styrofoam and polystyrene it only slightly increases their weight making it excellent for tours and flown pieces. Consumption: Undiluted allow around 0.6 - 1.2 kg per m².

Spot the difference. The top sample board has been covered with 1075, the board below with 1080.

- ✓ Good for touring
- ✓ Flown pieces

Haussmann's Foam Armour 1075	size	code	price
Off-white	18 kg [approx 10 L]	PAT1075	£158.75
Haussmann's Foam Armour Light 1080	size	code	price
Off-white	12 kg [approx 12 L]	PAT1080	£147.56



Rosco Foamcoat sprayed onto MDF with a hopper gun to get a deep texture.

Rosco Foamcoat A water-based protective coating for Styrofoam and polystyrene. Rosco Foamcoat has a consistency of wet plaster which dries to a hard durable coating that can be sanded, carved or smoothed. Uses include creating patterns such as bark or stone. Can also be used as a surface coating on fibre glass. This product can suffer slightly from consolidation in the pot and may need some aggressive mixing prior to use. See our Mixers [page 86]. Apply with a gloved hand, stiff brush, trowel or a Hopper Gun [page 93].

Rosco Foamcoat	size	code	price
Off-white	3.79 L	ROS60717	£80.50
Off-white	13.26 L	ROS60719	£263.50



This sample board was applied with varying thickness onto polystyrene and shows its natural stone colour.

Haussmann's Styro-plast This is our replacement for Hardkote which is no longer obtainable. It is a synthetic paste made with a coarse marble sand giving it a granular finish. The texture can be built up to a thick layer without it slumping. Once dry, Styro-plast provides a very tough flame-retardant coating that will withstand substantial knocks without cracking or denting. Apply with a trowel or gloved hand. Consumption: Allow around 1.8 - 2.2 kg per m².

- ✓ Super tough coating
- ✓ Fire-retardant
- ✓ Granular texture finish
- ✓ Large container offering excellent value

Haussmann's Styro-plast	size	code	price
Off-white	20 kg [approx 16 L]	PROSTY1020	£124.20

For power mixing machines and mixing tubs go to page 86.



Murex - all substrates Exceptional adherence to all substrates including old painted surfaces, glazed tiles, primed wood, brick and even many plastics. Working time 30 minutes at 20°, can be over painted in 24 hrs. It is supplied as a powder for mixing with water.

- ✓ No thickness limitation
- ✓ Can be nailed or screwed into
- ✓ Impact resistant
- ✓ Interior or exterior

Murex	size	code	list	price
White	2 kg	PROMUR2		£19.31
White	5 kg	PROMUR5	£43.78	£36.95
White	15 kg	PROMUR15	£85.90	£77.31

See also Toupret TX110 [page 49] and Plaster of Paris [page 123].



Artex Textured Finish AX The original Artex Textured Finish AX is formulated from selected water-soluble binders combined with inert fillers. It is supplied as a powder for mixing with water. When applied to non-combustible surfaces Artex provides a Class 0 surface in accordance with National Building Regulations. Artex is non-toxic and non-hazardous, however the use of gloves and a dust mask are recommended to prevent irritations. Artex can be overpainted when dry.

Artex AX	size	code	price
White	25 kg	PAT835	£38.19

See also Toupret TX110 [page 49] and Jesmonite Water-based Glass Fibre System [pages 115 - 118].



Dekozell - Creative Dekozell Creative comes highly recommended from customers across Theatre as well as Film & TV as a sustainable, eco-friendly, texture coating. Used to create textures of all kinds, brickwork, rust, bark, moss or even fine weathering on paintwork. Dekozell Creative is made of 100% cellulose fibres, modified to be ultra lightweight and fine grade, these fibres are a by-product of wood fibre production only using

wood from sustainable sources. The best way we could think of describing how it sticks to surfaces so well without anything other water is when at school you would soak toilet paper with water and throw it at the ceiling; as it dried it would stick fast and would become a permanent fixture of any school toilet. Not that anyone at Flints has ever done that. To use, simply mix with water, and colour using pigments or paint - it takes colour really well. Can be sprayed using a hopper gun [recommended 3-4 bar, 250 L/min flow], by trowel or scraper, or even by roller or brush. The 1.9 kg bag goes quite a long way; for a "standard" mixture prep, combine the whole bag with 16 L of water plus a L of Acrylic Paint (or PVA), and blend with a mixing paddle for 3 mins. For large surface areas, a blend of approaches may be most effective - spraying the bulk of the product using a stencil, and then working into it with a trowel or scraper.

Dekozell Creative	size	code	price	8+
	1.9 kg [makes 18 L]	PRODEK19	£68.50	£61.65

HATO@PLAST - FILLING AND TEXTURING PASTES



either can be over-coated with acrylic paint

Hato@Plast is an emulsion based filling and texturing paste. Available in 2 different finishes - hard and flexible [page 46]. Easily over coated with any acrylic emulsions - Haussmann of course recommend their range of paints - Hato@Design, but we have over coated samples with Rosco's Supersaturated paint with equal success. This highly versatile product is a dream to work with for Scenic Artists and Prop Makers alike.

Hato@Plast 1070H - Hard This water based paste dries quickly to a hard consistency which once fully cured can be easily sanded to give an extremely smooth finish. Suitable for application to wood, metal, and plastics it is a brilliant priming paste for inflexible props made from multiple materials. The viscosity of the paste allows it also to be easily applied to vertical surfaces, but it can also be piped out of an icing bag for highly detailed embellishments. Available in both the original colouring of a very soft blush, and tinted black version which is very very matt black.

HATO@Plast Hard	1 kg	price	20 kg	price
1070H	PAT1070H01	£14.65	PAT1070H20	£127.77
1070H Black	PAT1070HB01	£18.09	PAT1070HB20	£149.95

HATO@SAFE - CLASS 'O' COATING



Hard foam coated with HATO@Safe and a layer of Quadraxial Fabric for reinforcement. Colour can also be added easily using water-based paint.

HATO@Safe This simple non-combustible [EN13501] coating system from Haussmann is great for propmakers on the go who need to reinforce small props. Easy to use, simply add water to the powdery base [37:100], mix thoroughly and apply to the surface [styrofoam, wood, hard-foam boards and plastics]. The result is a ceramic-like surface which is smooth and inflexible. We recommend using quadraxial fabric to reinforce, it can be susceptible to cracks when point pressure is applied. Water-based paint

can be added in small quantities to the mixture before application to introduce a colour. Normal colour: Off-White. See also Jesmonite [page 115]. SPECIFICATION: Ratio Water: HATO@Safe Powder - 37:100. Open time of 60 minutes, Full cure in 24 hours. Apply by brush, or palette knife.

HATO@Safe	1 kg	price	5 kg	price
	PAT1090001	£16.55	PAT1090005	£59.00

To build up areas of broken texture why not apply patches of our flame retardant underfelt [page 141].

Have fun and make a mess with the Flickatex machine [page 78]!

PLIABLE COATINGS



Flintex An economical, flexible and flame retardant texture compound which is water-based and can be tinted with any water-based pigment or paint. It is a durable product only marginally less tough than Idenden Brushcote. Ideally suited to theatre scenery and most other projects excepting those needed to endure very heavy traffic.

Adding Fillite [page 48] will create a lighter and more economical mix for larger areas. It will be slightly less flexible but will have a more matt finish – good for bricks or York stone on ply. Foam Crumbs or Cork Granules [page 48] can also be added for more texture. Only available in white. Suitable for interior and exterior use [although adding pigment and texture may effect its weather resistance]. May be applied with airless spray equipment [page 94] SPECIFICATION: Non-flammable when wet and BS 476 Parts 4, 6, 7 Class 0 when dry. Moisture vapour permeability: 0.11 perms. Fungal resistant. Weight: 1.35 kg per L

Flintex	code	10 L	10+	Tradeline 20+
White	PATFHS810	£84.75	£73.00	£67.65



Flints Mud A thick flame retardant waterborne texture that is perfect for creating stage landscapes. Apply with a gloved hand, trowel, stiff brush or airless spray onto canvas, underfelt, polystyrene or almost any substrate. Flints Mud dries to a tough but flexible finish complying to BS 476 Part 6 and Part 7 Class 0. Cloths textured with Flints Mud can be rolled up for transport. The surface will be resilient enough for use on floors in themed areas. Additional texture such as Foam Crumbs or Cork Granules [page 48] can be added to the Mud to vary the texture and the colour can be varied by adding concentrated Flints Liquid Pigments [page 25]. It can be smeared into artificial grass to break up monotonous areas. Colour approximately Pantone 4625U. Health and safety sheets can be downloaded from flints.co.uk. Covers approximately 1 m² per litre resulting in a dry film thickness of 0.5 mm.

- ✓ Perfect for theming work in museums or theme parks
- ✓ The slightly soft surface is quiet to walk on and comfortable to sit on making it perfect for opera use

Flints Mud	code	10 L	10+	Tradeline 20+
Mud Brown	PATMUD	£89.00	£76.50	£69.00

Got a big texture job? Speed it up with an Airless Sprayer [page 94]!



Idenden Brushcote 30-150

A thick waterborne co-polymer that provides a durable and flexible texture coating that will not crack or flake. It can be easily applied with a brush, trowel or gloved hand directly to timber,

canvas, polystyrene, hessian, vacuum-formed plastics, underfelt and carpet. Its consistency makes it suitable for a wide range of textured applications, including wood grains, stippling, simulated mud and stone floors etc. When dry it is resistant to flame [BS 476 Part 7 Class 1, Building Regulations E15 Class 0] and most types of chemical attack. Idenden is available in three colours, the white can be coloured using one of the acrylic colour systems, Flints Liquid Pigments [page 25] or our dry pigment powders. It can be made lighter by adding Fillite or Glass Bubbles [page 121]. Health and safety sheets can be downloaded from flints.co.uk. Covers approximately 1 m² per litre resulting in a dry film thickness of 0.5 mm.

- ✓ Good adhesion to difficult surfaces
- ✓ Flame retardant to Class 1 and 0
- ✓ Will not crack or flake
- ✓ Can be tinted or overpainted
- ✓ Thixotropic, will not droop
- ✓ Flexible
- ✓ Durable
- ✓ Water-based
- ✓ Interior and exterior
- ✓ Reliable and easy to use

Idenden Brushcote 30-150	code	10 L	10+	Tradeline 20+
White	PAT810	£113.35	£103.29	£98.78
Grey	PAT812	£113.35	£103.29	£98.78
Black	PAT811	£113.35	£103.29	£98.78



Idenden Spraycote ET-150 A slightly thinner product than the popular Brushcote listed above. Spraycote is a soft paste which can be sprayed with an airless system. For best results use airless spray equipment [page 94]. Air texture guns may also be used [page 93] or it can be applied by brush. Spraycote is water-based, flexible, durable and dries to a flame resistant finish [BS 476 Part 7 Class 1, Building Regulations E15 Class 0].

Idenden Spraycote ET-150	code	10 L
White	PAT813	£129.72
Grey	PAT814	£129.72
Black	PAT815	£129.72



Rosco Flexcoat is a non-toxic, white water-based coating that is excellent for use as a flexible protective coating over all types of polystyrene and soft foams. It is especially useful on foam scenery and props which require added protection yet need to remain lightweight. It performs well over concrete, primed metal and primed wood.

Flexcoat contains no plasticisers, so it will not become brittle with age or exterior exposure. It is compatible with all Rosco paints used either as tints or surface coatings. Flexcoat can be mixed with rubber and foam granules to provide a strong and flexible bonding agent [we recommend power mixing]. It is weatherproof and provides a Class A flame-retardant coating over most substrates.

Rosco Flexcoat	size	code	price
White	3.79 L	ROS6071201	£71.75
White	18.95 L	ROS6071202	£346.25



Hato@Plast is an emulsion based filling and texturing paste. Available in 2 different finishes - hard [page 42] and flexible. Easily over coated with any acrylic emulsions - Hausmann of course recommend their range of paints - Hato@Design, but we have over coated samples with Rosco's Supersaturated paint with equal success. This highly versatile product is a dream to work with for Scenic Artists and Prop Makers alike.

Hato@Plast 1071F - Flexible Also water-based, this version offers more flexibility to the finish, and can be built up or worked into more easily to give a textured finish that is flexible to the touch. Suitable for application onto hard and flexible surfaces alike. We found this worked particularly well as a smoothing coating on foam/polystyrene structures (can be sanded smooth), and would work well for many prop-applications. It can also be used in thick layers and worked into as a texturing paste so could also be good for touring scenic elements such as fake rocks or tree trunks. Can be applied to vertical or flat surfaces by trowel, float, or even piped through an icing bag. Dries without cracking and retains a flex once dry.

Hato@Plast 1071SE - Flame Retardant Flexible

A production managers dream, this works in just the same way as the standard flexible Hato@Plast, but is also self-extinguishing! Perfect for scenic elements that need to meet FR standards. Please note, this does not flame retard an already flammable base, so it's designed to work in-conjunction with pre-treated base materials such as our Flame Retardant grade polystyrene (see page 101).



HATO@Plast Flexible	1 kg	price	15 kg	price
1071F	PAT1071F01	£18.67	PAT1071F15	£124.90
1071FSE Flame Retardant	PAT1071SE01	£15.43	PAT1071SE15	£127.77

WEAVE FILLERS

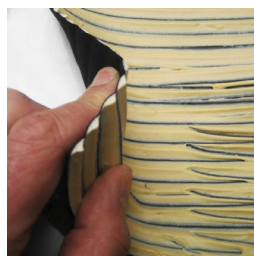


Weave Filler 916 Weave Filler 916 and 916SE are highly elastic materials for filling open weave textiles from the finest bobbinet to massive one-inch-square architectural nets. The 916SE is the flame retardant version. This well-proven product will flow in one brush stroke to fill the very largest gauzes and nets. Once dry further layers can be applied for added texture. It is best to lay out your gauze onto a floor covered with polythene and dusted with French Chalk to help with the release and to prevent the cloth from sticking to itself when it is rolled for transport. The weave filler remains highly flexible for many years and even at sub-zero temperatures. Can also be used as a non-skid backing to rugs and druggets [page 63] and as an edge binder to prevent materials from fraying. A very impressive product.

Weave Filler 916	size	code	price
Ecru	1 kg	PROWF9161	£21.32
Ecru	5 kg	PROWF9165	£73.25

Weave Filler 916 SE	size	code	price
Flame Retardant	10 kg	PROWF91612	£199.98

NB: The 916 SE Flame Retardant version can discolour some dark cloths. Please try a sample first. It also has a very short shelf life, so we have to manufacturer to order - please order it about 10 days in advance of being required for optimum usage.



Weave Filler and Texture 1047 Highly elastic, opaque and suitable for applying thick three-dimensional decoration to all kinds of textiles. 1047 SE is the flame retardant version. Its elasticity is not affected even by freezing temperatures. Custom colours can easily be made by mixing in, or overpainting with Rosco Supersaturated Paints [page 12]. The texture can be applied in a variety of ways including by syringe or pastry cook's decorator bag, otherwise a gloved hand or trowel can be used.

Weave Filler 1047	size	code	price
Buff	1 kg	PROWF10471	£21.20
Buff	5 kg	PROWF10475	£71.00

Weave Filler 1047 SE	size	code	price
Flame Retardant	10 kg	PROWF1047SE	£245.65

NB: The 1047 SE Flame Retardant version can discolour some dark cloths. Please try a sample first.

TRANSPARENT COATINGS



Hato@Clar 1072 Water-dilutable, colourless and transparent, HatoClar is a glossy fabric filler. Ideal for use where high transparency is required. In testing we found it to be an excellent texture binder; when used with glitter on hard surfaces it retained the shine of the glitter, and when used on flexible surfaces it remained pliable and adhered to the cloth and texture well.

HATO@Clar	1 kg	price	12.5 kg	price
	PAT1072001	£21.50	PAT1072125	£172.50



Transparent Plastik 1042 Water-dilutable, colourless and transparent coating. In testing we found it to be an excellent texture binder; especially on textiles with matt textures like micafil. It remained pliable and adhered to the cloth and texture well without leaving an obvious residue. It has a slight matt finish.

Transparent Plastik	1 kg	price	12.5 kg	price
	PAT1042001	£29.50	PAT1042125	£256.70



CrystalGel sprayed with Hopper Gun

Rosco CrystalGel A non-toxic, water-based material which provides a clear, plastic-like coating on virtually any surface used on stage. It air dries quickly, usually within hours, to form a flexible translucent surface. When dry it can be painted with Rosco paint. Cloths can be rolled up without cracking, peeling or sticking. Sand, sawdust, or powdered clay can be added to make unique textures. Being clear, CrystalGel is perfect for permanently securing glitter and when splattered onto windows it makes a great rain effect. It will ferociously adhere to glass, plastics, canvas, foam, metal and wood and it is very effective on plexiglass-type materials.

Rosco CrystalGel	size	code	price
	1 L	ROSCG1	£22.10
	3.79 L	ROSCG128	£69.75
	18.95 L	ROSCG210	£311.50

COLOURED COSTUME COATINGS



PermBlood Permanent realistic wet blood effect for costumes and props - not to be used on skin! Great for creating fresh blood effects on costumes as once it is set, costumes can be laundered and used again without having to reapply the blood effect. Also suitable for application to costumes or props being used underwater. Similar effect can be achieved by pigmenting the transparent coatings listed on above for larger scale effects. Available in Original (fresh blood) and Dark (dried/old blood). 250ml Jar. Not to be confused with washable ProBlood on page 107.

PermBlood	code	price
Original	SFXPMR250	£33.25
Dark	SFXPMD250	£33.25

TEXTURE ADDITIVES

NEW



Cork Granules Sustainable option for textures, cork granules are natural, renewable and a waste material from making wine cork stoppers. Cork Trees are left alone for 25 years before they can be harvested for the first time; this is done by prying off the bark with specially designed axes. The tree is then left to regrow and can be harvested again after 9 years so no tree has to be cut down to generate this material. Use Flints Texture Binder or Flints Wood Glue

to bind and colour with water based pigments/paints or dry scenic pigment (mixed into thick paste before adding) to create all manner of scenic effects. Can also be used on its own to dress a set. Image shows it tinted with black paint, and mixed with PVA to make a tarmac effect. Supplied in 12 L recycled, recyclable, reusable tubs that are quite handy. Contact Customer Services for bulk sizes.

Cork Granules	size	code	price
	2-3mm	PROCORK23	£19.98
	3-7mm	PROCORK37	£19.98
	5-15mm	PROCORK15	£19.98



Rubber Chips Ideal for creating onstage texture and foliage effects. Rubber chips are medium-soft and quiet so they are a good choice of texture for opera scenery. They can be mixed with Flints Texture Binder [next page] or added to Flints Mud, Flintex, Rosco Flexcoat or even Idenden Brushcote to create the desired effect. Great value. For a flame retardant texture additive see the next column.

Approximate crumb size: 2 mm - 8 mm

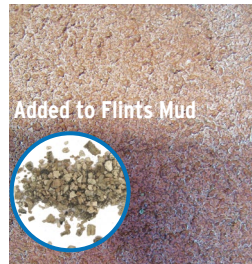
Rubber Chips	code	25 kg bag	Tradeline 5+
Black	PROCHIP	£23.45	£21.00



Foam Crumbs Soft Class 0 flame retardant foam crumbs widely used for creating soft textures. Excellent for hedge foliage and earth effects. Light in weight and very soft underfoot. They can be mixed with Flints Texture Binder [next page], Cyclorama Glue [page 127] or added to Flints Mud, Rosco Flexcoat, Flintex or even Idenden Brushcote to create the desired effect. Supplied black in a choice of three crumb sizes. A 4 kg bag is approximately 3.13 cubic feet.

Supplied black in a choice of three crumb sizes. A 4 kg bag is approximately 3.13 cubic feet.

Foam Crumbs	type	code	Tradeline
up to 4 mm	fine	PROFCAMEDF	£127.98
up to 10 mm	medium	PROFCAMED	£127.98
up to 50 mm	chunky	PROFCAMEDL	£127.98



Micafil [Vermiculite] A naturally occurring inert flame resistant material which can be mixed with Flints Mud, Idenden, Flexcoat or one of the consolidating binders to form a lumpy but lightweight texture. Sparkly appearance. Stocked in two grades. Average particle size: standard approx 5 mm, coarse 10 mm.

Micafil	code	4 cubic ft bag	Tradeline 10+
Standard	PAT836	£31.65	£28.50
Coarse	PAT837	£31.65	£28.50



Fillite A glass-hard, inert, hollow silicate sphere. Fillite is primarily used to reduce the weight of textures or moulding materials. The spherical nature of the material ensures the lowest quantity of binder is needed to wet out the material. When mixed with Flintex or Idenden it will form a good texture for brick or York stone. The mix will be slightly less flexible but with a slightly matt finish.

SPECIFICATION: Average particle density: 600 - 850 g/L. Average bulk density: 350 - 450 g/L. Packing factor: 60% - 65%. Appearance: grey powder. Hardness: Mohs scale 5. Average wall thickness: 5% - 10% of sphere diameter. Melting temperature: 1,200° - 1,350°C. Thermal conductivity: 0.11 Wm - 1K-1. Loss on ignition: 2% maximum. Surface moisture: 0.3% maximum. Crush strength: 105 - 210 kg/cm² [1500 - 3000 psi].

- ✓ Lightweight – reduces the weight of your texture material
- ✓ Spherical – free-flowing
- ✓ Inert

Fillite	approx volume [bulk density]	code	price
20 kg	50 L	PRO500SG	£69.49



Glass Bubbles This very lightweight material can be mixed with textures such as Idenden and fillers to form a much less dense texture material. It is one third the density of Fillite. It is of particular use when applying textures to scenic cloths which will rapidly become too heavy using conventional textures. See also Colloidal Silica, Fillite and Micro Fibres [page 121].

SPECIFICATION: Composition: 'C' Glass. Appearance: white. Particle size: 40 - 80 microns. Particle density: 200 g/litre approx. Bulk density: 100 - 150 g/litre approx.

Glass Bubbles	approx volume [bulk density]	code	price
0.3 kg	3 L	FILA230001	£17.34
5 kg	50 L	FILA230003	£163.93

CONSOLIDATING MEDIUMS



Flints Texture Binder

An economical and powerful binder that has been developed to consolidate texture materials such as foam crumbs, rubber chips, Micafil [Vermiculite], sawdust etc. into a scenic coating that will adhere well to most materials and will remain flexible over the long-term.

Always try a small sample first to satisfy yourself that the product is suitable for your particular application. White in the pot but dries clear. Gives a water resistant finish.

Sadly we can no longer supply this as a small sample pot, or a larger 10 L pot!

Flints Texture Binder	code	5 L
Clear	PAT80305	£79.95

For other consolidating mediums see Flints Cyclorama Glue [page 127]; PVA glues such as Flints Bond [page 128]; Rosco Flexcoat [page 46]; Rosco CrystalGel [page 47] and Idenden Brushcote [page 46]. Haussmann Hato® Clar [page 47], and Transparent Plastik [page 47].

TRADITIONAL POWDER FILLERS



Can be used as a texture too!

Toupret TX110 This is a rapid-drying filler to replace the old Toupret Rapide. It can be used as thick as you like, as a filler or texture. It will be set after 40 minutes [at 20°] and ready to rub down or overcoat in less than 3 hours. It will adhere to glazed ceramic tiles, old painted surfaces, brick, stone, primed timber, concrete etc. Once dry it can be screwed or nailed into. Interior use only. See also Murex [page 44] and Plaster of Paris [page 123].

Toupret TX110	size	code	list	price
Off-white	2 kg	PAT8322		£13.89
Off-white	5 x 1 kg	PAT8325		£25.20
Off-white	10 x 1 kg	PAT83210	£43.26	£36.49



Polyfilla The decorator's traditional filler. Powder mixed with water. A slower drying filler.

Polyfilla	size	code	price
Off-white	450 g	FIL160	£3.26
Off-white	900 g	FIL161	£5.03
Off-white	1.8 kg	FIL162	£9.56

READY-TO-USE FILLERS



Fine Surface Polyfilla A convenient tube filled with very fine ready-mixed super smooth filler for a perfect blemish-free finish. Also widely used by art restorers to repair damaged artwork.

Fine Surface Polyfilla	size	code	price
Off-White	400 g	FIL165	£5.33



Red Devil One-time Filler This super-lightweight, less than appropriately named, ready-to use filler has been requested many times by scenic artist and carpenters alike! You guys can't seem to get enough of it - we have to admit, that we were impressed when we tried it, and the price point works for most budgets

too. Extremely dry - they recommend adding a drop or two of water if required, it dried and it's coat-able with a water-based paint within 30 minutes. Definitely need to prime this filler with at least 2 coats of paint [Flints White is a great choice here, see page 6] before applying the finish of choice. Beware, it sets quite 'soft' so don't use this on any surface likely to withstand a high-impact. Claims to be used for interior and exterior work, we haven't tested in an exterior environment, but in any case, it would be over-coated and imagine it would be fine. Dries white.

Red Devil One-time Filler	size	code	price
	1 L	PATRDF1	£9.12
	4 L	PATRDF4	£26.32



Terraco Handycoat Interior Handycoat Interior is a multi-purpose, ready-mixed, interior skimming, jointing and patching compound which bonds extremely well to cementitious materials, gypsum based substrates and boards, spray-plaster, wood and all common types

of building surfaces. We think its particularly good for skimming joints between flats in exhibition spaces for a really clean finish. Consumption: Undiluted allow around 0.5 - 1.5 kg per m².

- ✓ Excellent adhesion
- ✓ Can be applied up to 4 mm thickness
- ✓ Quick drying and no shrinkage
- ✓ Natural finish which doesn't flake off
- ✓ No need for primer or sealer
- ✓ Good for skimming joints

Terraco Handycoat Interior	size	code	price
	5 kg	PAT631100	£12.15

For black sand, marble dust and other powders see page 25.

REPAIR FILLERS



Isopon P40 Repair Kit A very useful polyester paste with glass fibres for bridging holes on steel [such as rust holes], most types of metal or GRP etc. Isopon P40 forms a very hard durable surface and can be sanded and shaped if required. It is easily covered with standard polyester filler [see previous page] or can be over-painted directly. See page 119-121 for more Glass Fibre products.

Isopon P40	size	code	price
	600 ml	FIL143	£35.23

TWO-PART FILLERS



Isopon P38 Body Filler A two-part polyester-based filler, designed as a standard-grade professional car body filler but suitable for most filling tasks. It is also widely used in model-making. Dries quickly and gives a very smooth finish. Comes complete with hardener but extra can be bought separately.

Isopon P38	size	code	price
	600 ml	FIL136	£21.00
	1.2 L	FIL137	£33.42
	2.25 L	FIL138	£51.66
	3.5 L	FIL139	£71.09

P38/P40 Hardener	size	code	price
Red	19.5 g tube	FIL140	£4.48



U-Pol Easy One Body Filler A hugely popular, creamy, very easy to sand, two-part polyester body filler which will not shake loose. It is extremely lightweight and the easiest U-Pol filler to sand. Will adhere to steel, GRP, wood, aluminium etc. Dries pink-grey.

Big Smooth Easy One	code	list	3 L	Tradeline
Grey	FIL196	£54.16	£36.43	3+ £34.50



FEW Filler [Fine Elastic White] A very fine-particle filler intended for surfacing work on metal, GRP, plywood and other fillers, prior to spraying. The filler is white in colour and the hardener is red, to aid mixing. The final colour being slightly tinted white. The dense finish generally requires no priming prior to topcoat application making it a great choice for final

imperfections. [20 min cure].

FEW Filler [Polyester]	size	code	price
Blush white	1.5 kg	PR09136	£20.78

STYRENE-FREE TWO-PART FILLERS



Metolux - Two-Part Styrene-Free Wood Filler Recommended to us by the National Theatre's workshops teams, this clever filler has really impressed Gary from our technical team, he even said "all the benefits of the P38 I normally use, but without the noxious smell!" Available in a useful range of 'wood'

colours, and two sizes so as to allow for all jobs, whether it's a small model, a bespoke piece of furniture, or a large set for the West End. The pre-coloured high-strength polyester wood filler is provided in a hard wearing tin with dish lid for mixing; the hardener is package d separately in foil within. Gary said he found it quite stiff to mix at first, but also noted that it testing it mid-winter in a draughty workshop could have contributed to his difficulty - he ultimately found it mixed up just as easily as other 2-part fillers.

- ✓ Provides a durable repair; in our tests Gary found that once hard, a fingernail was unable to dent the surface, and it had very good adhesion to the wood substrate
- ✓ Styrene-Free, so workshop friendly without high-spec ventilation
- ✓ Non slump for corner work
- ✓ Sand-able (note in our test, the colour seemed to lighten once sanded)
- ✓ Paint-able stain-able and varnish-able
- ✓ For interior or exterior use

Metolux	770 ml	price	3.3L	price
White	PAT65432	£13.27	PAT65433	£46.90
Pine	PAT65438	£13.27	PAT65439	£46.90
Mahogany	PAT65447	£13.27	PAT65448	£46.90
Light Oak	PAT65441	£13.27	PAT65442	£46.90
Black Oak	PAT65626	£13.27	PAT65625	£46.90
Teak	PAT65435	£13.27	PAT65436	£46.90
Redwood (Light)	PAT65444	£13.27	PAT65445	£46.90