

SPECIALIST SCENIC FINISHES

HATO@RUST EFFECT



Avoid discolouring other paints on the piece

Objects rusted with the HATO@Rust system; above a piece of fibre rope, below a galvanised Key Clamp.

HATO@Rust Our favourite effect! The benefit of this system over the classic iron-fillings-and-vinegar method is that the activator should not interfere with other paints. Apply the primer to the surface of the object, allow to dry for 14 hours before applying the activator. We offer a choice of 2 activators; the liquid form—can give the user more control, as the effect can be built up gradually, but has a low viscosity and will drip off objects; this can of course help add to an effect on a piece of scenery, but it's worth noting [takes a few hours to develop rust effect]—and the gel form—ideal for creating a strong rust effect quickly [starts to work in minutes], and we recommend it for working on 3-D objects/vertical surfaces it will not drip off. We recommend sealing with the Rust Effect Varnish, as without it, the rust can rub onto clothes and skin, causing marks. The Rust Effect Varnish barely altered the appearance of the rust whereas conventional glazes can tend to spoil the effect.

SPECIFICATION: Primer Coverage: 4 m²/kg. Liquid Activator Coverage: 8-10 m²/L. Gel Activator Coverage: 8-10 m²/L. Varnish Coverage: 8-10 m²/L.

HATO@Rust Effect System	size	code	price
HATO@Rust Primer	2.5 kg	PAT233658	£41.98
Liquid Activator	1L	PAT233662	£8.25
Gel Activator	1L	PAT233662G	£8.98
Varnish	1L	PAT233660	£11.65

IRON POWDER

F

See also Dirty Down Rust Effect Spray [page 65]



Iron Powder This fine iron powder will rust quickly with water and is excellent for realistic rust effects. For best results apply a coat of a matt glaze such as Polyvine Dead Flat [page 55] onto your base colour. While the glaze is still wet sprinkle liberal quantities of iron powder into the glaze and spray with vinegar using a hand-held mister [page 94]. The iron powder will

immediately begin to rust. Realistic-looking riveted steelwork can be achieved by glueing our Wooden Rivets [page 98] to MDF and applying some flat glaze around the edges and letting it run. Sprinkle with iron powder, spray with vinegar and it will look like rust is weeping from the rivets. Excess powder can be swept off when the glaze is dry. We can also recommend trying the HATO@Rust Effect see above.

Iron Powder	code	1 kg	10 kg+
	DPP258	£15.85	£14.28

See also Graphite Powder [page 36].

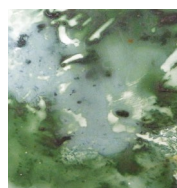
DIRTY DOWN PAINT-ON EFFECTS

Dirty Down Paint-on Effects This range of highly effective paint-on products provides the propmaker and scenic artist with a ready made effect which can either be left as it is or worked into and adapted to suit the designer's exact requirement. See also Fuller's Earth on page 25.

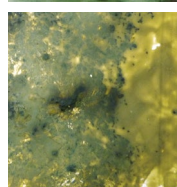
Rust Effect by Dirty Down The rust effect forms as the product dries. Light coats dry lighter, heavier coats dry darker. The colour will be varied and interesting rather than even. See notes below. See also Dirty Down Rust Spray [page 69], and Haussmann's Rust Effect .



Green Verdigris Effect by Dirty Down This corroded copper effect can be applied lightly or in many coats or splatters to provide a highly effective and attractive finish. See notes below.



Moss Effect by Dirty Down This light shade can be varied and darkened by the application of more coats. The product intentionally produces an effect with colour variations. See notes below.



See also Dirty Down Mould Spray [page 69].

Notes: Solvent-based. Works best at room temperature. Only apply to non-porous surfaces. Porous surfaces should be sealed with a matt varnish. We would suggest Plasti-kote clear sealer [page 69]. The effect looks best on rough surfaces. They do not adhere well to smooth polished surfaces. Do a test sample first. UN 1993 classified

Dirty Down Paint-on Effects	code	list	250 ml
Rust [lighter shade]	PATDDR	£35.00	£28.40
Verdigris [corroded copper effect]	PATDDV	£35.00	£28.40
Moss [lighter shade]	PATDDM	£35.00	£28.40

MICA FLAKES



Gold
DPP060

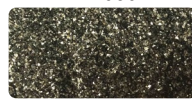


Silver
DPP058



Bronze
DPP056

F



Black/Silver
DPP059



Clear
DPP057

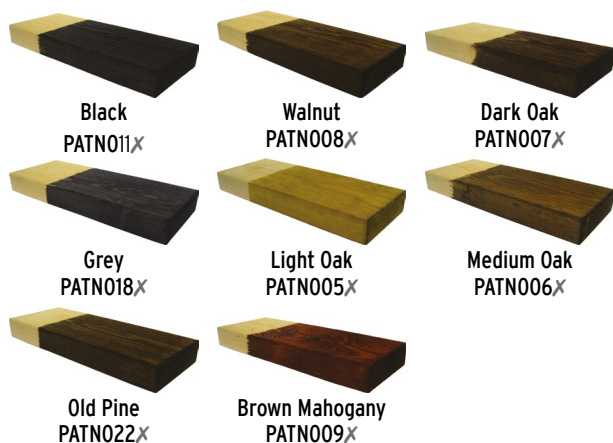
Mica Flakes

Mica is an inert complex silicate which forms naturally in thin transparent layers. It

makes an interesting sparkling decorative finish which can be easily fixed by sprinkling onto wet PVA adhesive or glaze. We supply it in 500 g tubs. See also Black Sand [page 25], Glitters [page 40], and Metal Powders [page 35].

Mica Flakes	code	500 g
Gold	DPP060	£17.50
Silver	DPP058	£17.50
Bronze	DPP056	£17.50
Black/Silver	DPP059	£17.50
Clear	DPP057	£17.50

WATER-BASED WOOD STAIN



Water-Based Wood Stain Very popular water-based stains for hard and soft woods, formulated to reduce the grain-raising effect normally associated with water stains. Covers 8 - 10 m² per litre.

Water-Based Wood Stain	code	1 L	code	5 L
Black	PATN0111	£11.39	PATN0115	£33.37
Dark Oak	PATN0071	£11.39	PATN0075	£33.37
Grey	PATN0181	£11.39	PATN0185	£33.37
Light Oak	PATN0051	£11.39	PATN0055	£33.37
Medium Oak	PATN0061	£11.39	PATN0065	£33.37
Old Pine	PATN0221	£11.39	PATN0225	£33.37
Walnut	PATN0081	£11.39	PATN0085	£33.37
Brown Mahogany	PATN0091	£11.39	PATN0095	£33.37

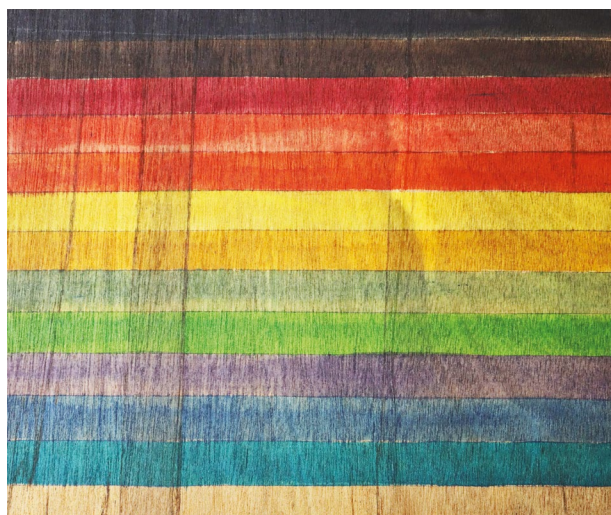
VAN DYKE



Van Dyke Crystals Used to provide a warm-brown aged look to wood. Vandyke can be mixed with warm water, glaze or size. The amount of dilution depends on the depth of colour required. Apply liberally with a wide brush.

Van Dyke Crystals	code	500 g
	DPP061	£14.80

See also FEVs French Enamel Varnish [page 30] and Scumbles [page 57].



Flints FEVs painted in a single stroke onto a wooden board. See page 30.

OIL-BASED WOODSTAIN



Rustin's Wood Dye An economical penetrating stain which will not raise the grain. Spirit-based. We can supply other sizes and makes of stain to order.



Rustin's Wood Dye	code	250 ml	code	1 L
Light Oak	PAT3571	£5.71	PAT35711	£16.31
Medium Oak	PAT3572	£5.71	PAT35721	£16.31
Dark Oak	PAT3573	£5.71	PAT35731	£16.31
Pine	PAT3574	£5.71	PAT35741	£16.31
Walnut	PAT3575	£5.71	PAT35751	£16.31
Antique Pine	PAT3576	£5.71	PAT35761	£16.31
Red Mahogany	PAT3577	£5.71	PAT35771	£16.31

For driftwood effects take a look at Flints Silver Grey Driftwood dye [page 33]. See also Dyes [page 29] and Glazes [page 51].

GLOW-IN-THE-DARK PHOSPHORESCENT PAINT



Hato@Tex Phosphorescent Paint This excellent glow-in-the-dark paint from Haussmann is perfect for both specialist effects on stage, and also for marking up back stage. Although the binder of the paint has been specially formulated to improve adhesion and flexibility when applied to fabric surfaces (in our testing we were really impressed with the flexibility), it is equally well applied to solid substrates such as wood, thermoplastics etc. We found that although it was a neutral coating, when applied onto Flints Black it was a little creamy (not noticeable on white surfaces). Once charged with UV / Tungsten light the pale green glow is incredibly effective. Well priced for a glow-in-the-dark paint, we stock the 50 ml tester pots for those smaller jobs.

Phosphorescent	50 ml	price	1 Litre	price
	PAT342755	£9.00	PAT342751	£69.90

HATO@NANO TEXTILE PROTECTOR



HATO@Nano Textile Protector HATO@Nano Textile Protector has been specially developed to seal fabrics and paintings with a self-cleaning, lotus effect. Various stage materials, paintings, furniture, as well as natural and synthetic clothing and costumes

can be protected with HATO@Nano Textile Protector. It has been tested with oil and water-based substances such as mustard, ketchup, and wine. We tested it with Pigs Might Fly Blood [page 107] and it rolled right off. Garments treated with HATO@Nano can survive several washes [up to 30° C, max. 4 cycles before re-application]. Apply by brush, low pressure, or airless sprayer. For small surfaces HATO@ Nano Textile Protector can be applied with a hand-held spray gun. We recommend testing the product on a small section of the fabric before use. SPECIFICATION: Consumption: approx. 120 - 150ml / m².

HATO@Nano	1 Litre	price	5 Litres	price
	PAT15601	£28.65	PAT15605	£97.75