

# GLAZE & VARNISH FINDER

Find your perfect glaze quickly!

Choose the features you require here →  
.....and find the glaze here ↓

|                                | Suitable for floors | Suitable for murals or walls | Suitable for furniture or props | Very heavy wearing on floors | Normal wear on floors | Exceptional gloss | Gloss | Satin [eggshell/ribbed effect] | Matt | Dead Flat | Marine grade | Exterior grade | Interior near water | Water based | Oil or shellac based | Very clear | Pale | Slightly golden | Contains UV filters | Increased open time. | Frosting and staining windows | Fire retardant grade | Low slip | Protects metals against rust | Top finish only or primer only | Huge quantities held in stock | Speciality finish | Extra value | Eco-friendly |
|--------------------------------|---------------------|------------------------------|---------------------------------|------------------------------|-----------------------|-------------------|-------|--------------------------------|------|-----------|--------------|----------------|---------------------|-------------|----------------------|------------|------|-----------------|---------------------|----------------------|-------------------------------|----------------------|----------|------------------------------|--------------------------------|-------------------------------|-------------------|-------------|--------------|
| Bona Traffic HD                | ✓                   |                              |                                 | ✓                            |                       |                   | ✓     |                                | ✓    |           |              | ✓              | ✓                   |             | ✓                    |            |      |                 |                     |                      |                               |                      | ✓        |                              | ✓                              |                               |                   |             |              |
| Bona Traffic HD Anti-slip      | ✓                   |                              |                                 | ✓                            |                       |                   |       | ✓                              |      | ✓         |              | ✓              | ✓                   |             |                      | ✓          |      |                 |                     |                      |                               |                      | ✓        |                              |                                |                               |                   |             |              |
| Bona Traffic HD RAW            | ✓                   |                              |                                 | ✓                            |                       |                   |       |                                |      | ✓         |              | ✓              | ✓                   |             |                      | ✓          |      |                 |                     |                      |                               |                      | ✓        |                              |                                |                               |                   |             |              |
| Bona Mega                      | ✓                   |                              |                                 | ✓                            |                       |                   | ✓     | ✓                              |      | ✓         |              | ✓              | ✓                   |             |                      | ✓          |      |                 |                     |                      |                               |                      | ✓        |                              | ✓                              |                               |                   |             |              |
| Bona Mega ONE                  | ✓                   |                              |                                 | ✓                            |                       |                   | ✓     |                                |      | ✓         |              | ✓              | ✓                   |             |                      | ✓          |      |                 |                     |                      |                               |                      | ✓        |                              |                                |                               |                   |             |              |
| Bona Classic Primer            | ✓                   |                              |                                 |                              |                       |                   |       |                                |      |           |              |                |                     |             |                      | ✓          |      |                 |                     |                      |                               |                      |          |                              | ✓                              |                               | ✓                 |             |              |
| Bona Polish                    | ✓                   |                              |                                 |                              |                       |                   | ✓     |                                |      |           |              |                |                     |             |                      | ✓          |      |                 |                     |                      |                               |                      | ✓        |                              | ✓                              |                               |                   |             |              |
| Rosco Colorcoat                | ✓                   | ✓                            | ✓                               |                              | ✓                     |                   | ✓     | ✓                              |      |           |              | ✓              | ✓                   | ✓           |                      | ✓          |      |                 |                     |                      |                               |                      |          |                              |                                |                               |                   |             |              |
| Rosco Premiere Clear           | ✓                   | ✓                            | ✓                               | ✓                            |                       |                   | ✓     | ✓                              |      |           |              | ✓              | ✓                   | ✓           |                      | ✓          |      |                 |                     |                      |                               |                      |          |                              |                                |                               |                   |             |              |
| Rosco Clear Acrylic            | ✓                   | ✓                            | ✓                               |                              |                       |                   | ✓     |                                |      | ✓         |              | ✓              | ✓                   | ✓           |                      | ✓          |      |                 |                     |                      |                               |                      |          |                              |                                | ✓                             |                   |             |              |
| Polyvine Heavy Duty Extreme    | ✓                   |                              |                                 | ✓                            |                       |                   |       |                                |      | ✓         |              | ✓              | ✓                   | ✓           |                      | ✓          |      |                 | ✓                   |                      |                               |                      |          |                              |                                | ✓                             |                   |             |              |
| Polyvine Heavy Duty Floor      | ✓                   |                              | ✓                               |                              | ✓                     |                   | ✓     |                                |      | ✓         |              | ✓              | ✓                   | ✓           |                      | ✓          |      |                 |                     |                      |                               |                      |          |                              |                                |                               |                   |             |              |
| Polyvine Decorators Varnishes  |                     | ✓                            | ✓                               |                              |                       |                   | ✓     | ✓                              |      | ✓         |              | ✓              | ✓                   | ✓           |                      | ✓          |      |                 | ✓                   |                      |                               |                      |          |                              |                                | ✓                             |                   |             |              |
| Polyvine Exterior Varnishes    |                     | ✓                            | ✓                               |                              |                       |                   | ✓     | ✓                              | ✓    |           |              | ✓              | ✓                   | ✓           |                      | ✓          |      |                 | ✓                   |                      |                               |                      |          |                              |                                | ✓                             |                   |             |              |
| Polyvine Wax Finish Varnish    |                     | ✓                            | ✓                               |                              |                       |                   | ✓     | ✓                              |      |           |              | ✓              | ✓                   | ✓           |                      | ✓          |      |                 |                     |                      |                               |                      |          |                              |                                |                               | ✓                 |             |              |
| Polyvine Glass Frost           |                     | ✓                            | ✓                               |                              |                       |                   | ✓     |                                |      |           |              | ✓              | ✓                   | ✓           |                      | ✓          |      |                 |                     | ✓                    |                               |                      |          |                              |                                | ✓                             |                   |             |              |
| Polyvine Crackle Glazes        |                     | ✓                            | ✓                               |                              |                       |                   |       |                                |      |           |              | ✓              | ✓                   | ✓           |                      | ✓          |      |                 |                     |                      |                               |                      |          |                              |                                | ✓                             |                   |             |              |
| Polyvine Craquelure            |                     | ✓                            | ✓                               |                              |                       |                   |       |                                |      |           |              | ✓              | ✓                   | ✓           |                      | ✓          |      |                 |                     |                      |                               |                      |          |                              |                                | ✓                             |                   |             |              |
| Polyvine Scumbles              |                     | ✓                            | ✓                               |                              |                       |                   | ✓     |                                |      |           |              | ✓              | ✓                   | ✓           |                      | ✓          |      |                 |                     |                      |                               |                      |          |                              |                                | ✓                             |                   |             |              |
| Polyvine Extra Pale Dead Flat  |                     | ✓                            | ✓                               |                              |                       |                   |       |                                |      | ✓         |              | ✓              | ✓                   | ✓           |                      | ✓          |      |                 |                     |                      |                               |                      |          |                              |                                |                               |                   |             |              |
| Polyvine Crystal Clear Lacquer |                     | ✓                            | ✓                               |                              |                       |                   | ✓     | ✓                              |      |           |              | ✓              | ✓                   | ✓           |                      | ✓          |      |                 |                     |                      |                               |                      |          |                              |                                | ✓                             |                   |             |              |
| Aqualac Floor Lacquer          | ✓                   |                              | ✓                               |                              | ✓                     |                   | ✓     | ✓                              | ✓    |           |              |                | ✓                   | ✓           |                      | ✓          |      |                 |                     |                      |                               |                      |          |                              |                                |                               | ✓                 |             |              |
| Bolloms Intulac                |                     |                              | ✓                               |                              |                       |                   | ✓     | ✓                              |      |           |              |                | ✓                   | ✓           |                      |            |      |                 |                     |                      |                               | ✓                    |          |                              |                                |                               |                   |             |              |
| Bristol 780 coating gloss      |                     | ✓                            | ✓                               |                              |                       |                   | ✓     | ✓                              |      |           |              | ✓              | ✓                   | ✓           |                      | ✓          |      |                 |                     |                      |                               |                      |          |                              |                                |                               |                   |             |              |
| Bristol AquaLak/AquaFast       | ✓                   | ✓                            | ✓                               |                              |                       |                   | ✓     | ✓                              | ✓    |           |              | ✓              | ✓                   | ✓           |                      | ✓          |      |                 |                     |                      |                               |                      |          |                              |                                |                               |                   |             |              |
| Flints Emulsion Glazes         |                     | ✓                            | ✓                               |                              |                       |                   | ✓     | ✓                              |      |           |              | ✓              | ✓                   | ✓           |                      | ✓          |      |                 |                     |                      |                               |                      |          |                              |                                | ✓                             |                   |             |              |
| Earthborn Wall Glaze           |                     | ✓                            | ✓                               |                              |                       |                   |       | ✓                              |      |           |              | ✓              | ✓                   | ✓           |                      | ✓          |      |                 |                     |                      |                               |                      |          |                              |                                |                               | ✓                 | ✓           |              |
| Earthborn Crackle Glaze        |                     | ✓                            | ✓                               |                              |                       |                   |       |                                |      |           |              | ✓              | ✓                   | ✓           |                      | ✓          |      |                 |                     |                      |                               |                      |          |                              |                                | ✓                             |                   | ✓           |              |
| Hausmann Crackle Glaze         |                     | ✓                            | ✓                               |                              |                       |                   |       |                                |      |           |              | ✓              | ✓                   | ✓           |                      | ✓          |      |                 |                     |                      |                               |                      |          |                              |                                | ✓                             |                   |             |              |
| Mylands Emulsion Glazes        |                     | ✓                            | ✓                               |                              |                       |                   | ✓     | ✓                              |      |           |              | ✓              | ✓                   | ✓           |                      | ✓          |      |                 |                     |                      |                               | ✓                    |          |                              | ✓                              |                               | ✓                 |             |              |
| Mylands Crackle Glaze          |                     | ✓                            | ✓                               |                              |                       |                   |       |                                |      |           |              | ✓              | ✓                   | ✓           |                      | ✓          |      |                 |                     |                      |                               |                      |          |                              |                                | ✓                             |                   |             |              |
| Coo-var Poly. Varnish          |                     | ✓                            | ✓                               |                              |                       |                   | ✓     | ✓                              | ✓    |           |              | ✓              | ✓                   | ✓           |                      | ✓          |      |                 | ✓                   |                      |                               |                      |          |                              |                                |                               |                   |             |              |
| Rylard Incralac Lacquer        |                     |                              |                                 |                              |                       |                   | ✓     |                                |      |           | ✓            | ✓              | ✓                   | ✓           |                      | ✓          |      |                 |                     |                      |                               |                      |          | ✓                            |                                | ✓                             |                   |             |              |
| Epifanes Clear Gloss Varnish   |                     |                              | ✓                               |                              | ✓                     |                   |       |                                |      | ✓         | ✓            | ✓              | ✓                   | ✓           |                      | ✓          |      |                 | ✓                   |                      |                               |                      |          |                              |                                |                               |                   |             |              |
| Epifanes Rapidclear Varnish    |                     |                              | ✓                               |                              |                       |                   | ✓     |                                |      | ✓         | ✓            | ✓              | ✓                   | ✓           |                      | ✓          |      |                 | ✓                   |                      |                               |                      |          |                              |                                |                               |                   |             |              |
| Epifanes Woodfinish            |                     |                              | ✓                               |                              |                       |                   | ✓     | ✓                              |      | ✓         | ✓            | ✓              | ✓                   | ✓           |                      | ✓          |      |                 | ✓                   |                      |                               |                      |          |                              |                                |                               |                   |             |              |
| Deks Olje                      |                     |                              | ✓                               |                              |                       |                   | ✓     | ✓                              |      | ✓         | ✓            | ✓              | ✓                   | ✓           |                      | ✓          |      |                 | ✓                   |                      |                               |                      |          |                              |                                |                               |                   |             |              |
| Owatrol Conditioner            |                     |                              |                                 |                              |                       |                   |       |                                |      | ✓         | ✓            | ✓              | ✓                   | ✓           |                      | ✓          |      |                 |                     | ✓                    |                               |                      |          | ✓                            |                                |                               |                   |             |              |
| Floetrol Conditioner           |                     |                              |                                 |                              |                       |                   |       |                                |      |           |              | ✓              | ✓                   | ✓           |                      | ✓          |      |                 |                     | ✓                    |                               |                      |          |                              |                                |                               |                   |             |              |
| Special Pale Polish            | ✓                   |                              | ✓                               |                              | ✓                     |                   |       |                                |      |           |              | ✓              | ✓                   | ✓           |                      | ✓          |      |                 |                     |                      |                               |                      |          |                              |                                |                               |                   |             |              |
| Button Polish                  | ✓                   |                              | ✓                               |                              | ✓                     |                   | ✓     |                                |      |           |              | ✓              | ✓                   | ✓           |                      | ✓          |      |                 | ✓                   |                      |                               |                      |          |                              |                                |                               |                   |             |              |
| Black Polish                   | ✓                   |                              | ✓                               |                              | ✓                     |                   | ✓     |                                |      |           |              | ✓              | ✓                   | ✓           |                      | ✓          |      |                 |                     |                      |                               |                      |          |                              |                                | ✓                             |                   |             |              |
| White Polish                   | ✓                   |                              | ✓                               |                              | ✓                     |                   | ✓     |                                |      |           |              | ✓              | ✓                   | ✓           |                      | ✓          |      |                 |                     |                      |                               |                      |          |                              |                                |                               |                   |             |              |
| Renaissance Wax                |                     | ✓                            | ✓                               |                              |                       |                   | ✓     |                                |      |           | ✓            | ✓              | ✓                   | ✓           |                      | ✓          |      |                 |                     |                      |                               |                      |          | ✓                            | ✓                              |                               |                   |             |              |
| Briwax                         |                     |                              | ✓                               |                              |                       |                   | ✓     |                                |      |           |              | ✓              | ✓                   | ✓           |                      | ✓          |      |                 |                     |                      |                               |                      |          |                              | ✓                              | ✓                             |                   |             |              |
| Slip Nomor                     | ✓                   |                              |                                 |                              |                       |                   |       |                                |      |           |              | ✓              | ✓                   | ✓           |                      | ✓          |      |                 |                     |                      |                               |                      | ✓        |                              | ✓                              | ✓                             |                   |             |              |
| Liquitex High Gloss Varnish    |                     | ✓                            | ✓                               |                              |                       | ✓                 |       |                                |      |           |              | ✓              | ✓                   | ✓           |                      | ✓          |      |                 | ✓                   |                      |                               |                      |          |                              |                                | ✓                             |                   |             |              |

1: GLAZE & VARNISH FINDER

# GLAZES & VARNISHES

The glazes that we stock are reliable, well-tested products and should give perfect results, nevertheless problems can occur. We would always recommend testing a sample area first. Here are some tips to help you achieve the perfect finish.

## To avoid blooming and white patches

- ✓ 95% of blooming problems relate to inadequate drying conditions so try to apply glazes in the morning and always ensure the premises are adequately heated. Remember that cold air falls so if you are painting on a floor you really need to be careful.
- ✗ Always avoid applying in the evening in the winter when the high relative humidity combined with cold temperature will cause blooming.
- ✓ If applying over emulsion paint, allow the base coats to dry thoroughly. Moisture will be migrating out of emulsion paint for at least 24 hours.
- ✓ If blooming has occurred try applying a gentle fan heater to an area and you may find it will gradually clear.

## To avoid a patchy finish

- ✓ Matting agents will settle to the bottom of the pot. Make sure that you stir matt and satin glazes thoroughly or you will get a patchy surface. Occasionally, the matting agents will cause a slight bloom on black or dark surfaces. Do a test area first. If a bloom occurs mix in some of the paint with the glaze and continue.

## To avoid roller marks and poor bonding

- ✓ Always ensure correct coverage. If the glaze says it will cover 9 m<sup>2</sup> per litre then actually mark out an area 3 m x 3 m, pour some glaze into the roller tray and let the roller absorb it, then pour out exactly 1 litre of glaze and use it up over the marked area. It will probably be easy to spread it much further – but don't do this! If the glaze goes on too thinly it will get absorbed into the substrate too quickly leaving inadequate bonding and showing tell tale roller marks. When applied at the correct thickness the roller marks will fall out and both the bond and durability will be improved.
- ✓ If applying a glaze to a difficult surface add a recommended adhesion promoter or seek further advice. Allow enough time for adequate testing.

## To avoid lap marks and brush marks

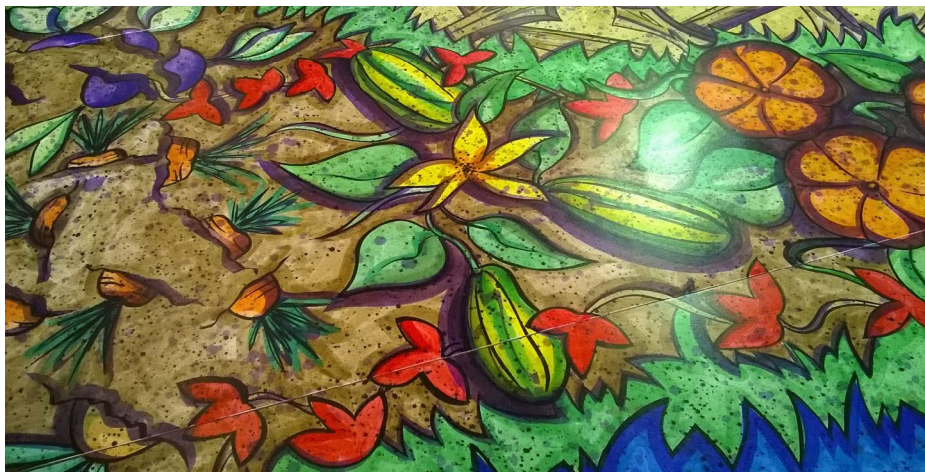
- ✗ Avoid glazing in direct sunshine, or a drying wind. Lap marks and brush marks are normally caused by too rapid drying. For top quality work it is essential to maintain a "wet edge". If you can't avoid working in conditions liable to cause rapid drying then choose a Tropical Scumble glaze [page 57] or add a conditioner/retarder such as Floetrol [page 23] for water-based glazes, Bona Retarder for Mega etc., or Owatrol for oil-based varnishes [page 59]. The addition of retarders can make dramatic improvements.
- ✓ Work fast with adequately loaded good quality brushes or rollers. Plan ahead so that you don't have to stop to move ladders etc. When working on large areas try to stop on a natural line to disguise the inevitable lap mark when you restart.
- ✓ Arrange good lighting preferably at a low angle so any discrepancies can be seen as you are working.

## To avoid white patches

- ✗ Don't leave glazes to dry overnight on flame retarded boards. The flame retarding chemicals are hygroscopic and will absorb moisture. These chemicals, given time, will migrate to the surface of the board and show as a white powdery patch which is very hard to get rid of.

## To avoid wrinkles and fish eyes

- ✗ Fish eyes are caused when applying a glaze to a surface contaminated with wax, silicones or grease. Stop and clean the surface with an appropriate cleaner or degreaser.
- ✗ Wrinkles are caused by puddling of the glaze normally on a flat surface. Avoid applying too heavily especially on floors.



This fun veg patch floor was painted by the scenic team of Splinter Scenery headed up by Toni Bysouth, for Rapunzel at the Everyman Theatre, Liverpool. The Veg Patch floor was a key element of the design by Dinah England, and needed to be bright and colourful, but also able to withstand all the typical capering about and high-jinx you can expect to see in a pantomime! Toni and her team chose to paint this with Rosco SuperSaturated paints [page 12] and then glazed it with Bona Mega for durability. Looks a treat!

# FLOOR GLAZES

# Bona®

Bona produce some of the finest water-based lacquers available. The manufacturing facilities in Sweden and Germany are certified under the ISO 14001 environmental management system. The company's R & D programme concentrates on the development of waterborne finishes which are safer to use and produce minimal impact on the environment. Flints sells over 15,000 litres of these glazes every year. Bona glazes are widely used in demanding applications such as West End musicals, art galleries and museums. You'll be in good company choosing Bona.

## BONA TRAFFIC



**Bona Traffic HD** Designed for commercial premises and public areas of very high traffic intensity, Bona Traffic HD provides a surface of virtually invisible protection. It meets EN 14904: 2006 [Indoor Sports Surfaces] for slip resistance. It is an exceptionally scratch resistant, non-yellowing, waterborne polyurethane, very quick drying, with low odour. Bona Traffic HD must be mixed with the hardener by shaking vigorously for 30 seconds.

**SPECIFICATION:** Resistance to wear: 1 - 2 mg/100 rev. Drying times: recoat 2 - 3 hours, full use 24 hrs. Coverage: 8 - 10m<sup>2</sup>/L per coat. Classified EC1R for very low emissions. Sheen Levels: see top of this page. Drying time can be retarded by adding up to 4% Bona Retarder [page 54].

| Bona Traffic HD     | hardener        | code        | list    | price   | Tradeline 3+ |
|---------------------|-----------------|-------------|---------|---------|--------------|
| <b>NEW TYPE</b> RAW | 4.55 L + 0.40 L | PAT3300     | £193.45 | £149.95 |              |
| Extra Matt          | 4.55 L + 0.40 L | PAT3096HD   | £169.06 | £126.15 | £119.75      |
| Silk Matt           | 4.55 L + 0.40 L | PAT30961HD  | £169.06 | £126.15 | £119.75      |
| Spare HD hardener   | 0.40 L          | PAT3096HARD |         | £28.59  |              |



**Bona Traffic HD Anti-slip** Bona Traffic HD Anti-slip is a 100% polyurethane two-component waterborne finish offering exceptional durability and protection for wooden floors. It has all the features of Bona Traffic HD but with the additional benefit of being formulated to meet the highest standards for slip resistance in workplaces and other situations with an increased risk of wet spills. Classified DIN

51-130 R10 [Very Low Risk of Slipping]. With its higher friction, Bona Traffic HD Anti-slip is an ideal choice for raked stages, treads, or areas that may get wet during performance. Bona Traffic HD Anti-slip must be mixed with the hardener by shaking it vigorously for 30 seconds. **NB:** This new formulation is not compatible with the old type, please do not mix them, and now uses the same hardener as the standard Bona Traffic HD. Covers 8 - 10 m<sup>2</sup> per litre.

**SPECIFICATION:** Resistance to wear: 2.5 mg/100 rev. Drying times: recoat 3 - 4 hours, light use 24 hours, full cure 7 days. Coverage: 8 - 10 m<sup>2</sup>/L per coat. Classified EC1R for very low emissions. Sheen Levels: see top of this page.

| Bona Traffic HD Anti-slip | hardener        | code        | list    | price   | Tradeline 3+ |
|---------------------------|-----------------|-------------|---------|---------|--------------|
| Matt                      | 4.54 L + 0.40 L | PAT3096NSN  | £187.75 | £148.62 | £140.15      |
| Spare HD hardener         | 0.40 L          | PAT3096HARD |         | £28.59  |              |

## Sheen Levels of Bona Lacquers

| Bona Product               | Reflective Value at 60° |
|----------------------------|-------------------------|
| Traffic HD RAW             | 2%                      |
| Traffic HD Extra Matt      | 11%                     |
| Traffic HD Silk Matt       | 40%                     |
| Traffic HD Anti-slip Matt  | 15%                     |
| Mega & Mega ONE Extra Matt | 9%                      |
| Mega One Silk Matt         | 40%                     |
| Mega Silk Matt             | 50%                     |
| Mega Mega Gloss            | 90%                     |

## BONA MEGA



**Bona Mega** A new generation water-based polyurethane, modified with natural vegetable oils using self-crosslinking technology to provide you with a one-component system. In a test 400,000 people walked over a panel finished with Bona Mega. Out of ten panels tested, Mega proved best in terms of wear-through, scuff, scratch, chemical resistance and visual appearance. On very pale floors Bona Mega will draw out the colours in the same way as a solvent-based varnish. Our tests showed

Our biggest selling floor glaze!

only very slight discolouration on white or pastel painted floors but users should carry out their own tests before working on very pale floors. "Sensational!" says Gordon Aldred, Scenic Artist and Designer.

**SPECIFICATION:** Resistance to wear: 5 mg/100 rev. Drying times: recoat 2.5 - 3 hours, light use 24 hours, full cure 7 days. Coverage: 8 - 10 m<sup>2</sup>/L per coat. Classified EC1 for very low emissions. Meets DIN 18032:2 for slip resistance [gloss, silk matt & matt]. For Sheen Levels see below. Drying time can be retarded by adding up to 4% Bona Retarder [see below].

| Bona Mega       | size | code     | list    | price  | Tradeline 3+ |
|-----------------|------|----------|---------|--------|--------------|
| Mega Gloss      | 5 L  | PAT3092  | £121.24 | £89.95 | £86.33       |
| Mega Silk Matt  | 1 L  | PAT30931 | -       | £25.62 | -            |
| Mega Silk Matt  | 5 L  | PAT3093  | £121.24 | £89.95 | £86.33       |
| Mega Extra Matt | 5 L  | PAT3095  | £121.24 | £89.95 | £86.33       |

NEW



**Bona Mega ONE** Bona Mega has been the go to 1-component heavy-duty floor glaze for years now, durable, with a reliable finish it has ONE drawback, it's slightly yellow (generally being only an issue over white or light colours.) New Bona Mega ONE however is crystal clear, but otherwise has the same excellent features listed above. Also, handily available in a 1 litre in both the extra matt and silk matt finishes - handy for props!

**SPECIFICATION:** 1 Component, Water based, Gloss Level for Extra Matt: 9% Low Odour, Drying Time: 1 - 2 Hours between coats. Full Cure in 5 Days

| Bona Mega ONE | size | code    | list    | price  |
|---------------|------|---------|---------|--------|
| Extra Matt    | 1 L  | PAT3101 | -       | £26.99 |
| Extra Matt    | 5 L  | PAT3105 | £123.92 | £96.79 |
| Silk Matt     | 1 L  | PAT3201 | -       | £26.99 |
| Silk Matt     | 5 L  | PAT3205 | £123.92 | £96.79 |



**BONA POLISH**



**Bona Gloss Polish** This is a water-based slip resistant floor dressing for use on a wide variety of floors including vinyl, rubber, marble as well as wooden floors treated with Bona products [not suitable on Melamine]. Conforms to DIN 18032:2 for slip resistance. Also available in matt to order. Covers 50 m<sup>2</sup> per litre.

| Bona Gloss Polish | code    | 1 L    | code    | list   | 5 L    |
|-------------------|---------|--------|---------|--------|--------|
|                   | PAT3041 | £13.34 | PAT3045 | £54.74 | £51.38 |

**BONA PRIMER**



**Bona Classic Primer** Using a small fraction of the solvents used in conventional primers and with hardly any smell this colour-enhancing primer is one of the most environmentally sound sealers available. Bona Prime acts as a bondbreaker which prevents timber boards being bonded together by the Bona Mega or any Bona topcoat. It allows the individual boards to move and should help avoid timbers splitting along the grain. Covers 8 - 10 m<sup>2</sup> per litre.

| Bona Classic Primer | code    | list   | 5 L    |
|---------------------|---------|--------|--------|
|                     | PAT3094 | £76.28 | £66.25 |

**BONA ACCESSORIES**



**Bona Retarder** An additive to prolong the open time of Bona lacquers and Bona Prime. Useful to stop roller marks in high temperatures with low humidity. Add 4%. [Whole pot to treat 5 L].

**Kills brush and roller marks!**

| Bona Retarder | code    | 200 ml |
|---------------|---------|--------|
|               | PAT309R | £12.09 |

**OTHER FLOOR GLAZES**



**Aqualac Acrylic Floor Lacquer** A very economical non-toxic water-based lacquer that is durable, scuff resistant and causes no discolouration. Covers 18 - 20 m<sup>2</sup> per litre. Not to be confused with Bristol Aqualak [spelt with a K] [page 56].

✓ Well-proven economical floor glaze

| Aqualac Acrylic Lacquer | code    | 5 L    |
|-------------------------|---------|--------|
| Matt                    | AQU1035 | £42.29 |
| Semi Matt               | AQU1015 | £42.29 |
| Gloss                   | AQU1025 | £42.29 |



**Polyvine Floor Heavy Duty Varnish** A completely clear varnish with a highly durable satin finish that gives full use of your floor in hours and is the hardest of the 'one pack' varnishes. Faster drying and curing than alternative coatings with a unique ability to resist marking from foot traffic. For a dead flat finish, where extra strength for heavy duty applications is required use the Satin as a basecoat.. Covers

**Dead Flat for floors!**

10 - 20 m<sup>2</sup> per litre.

✓ Introduced just a few years ago and already a best-seller.

NB: The matting agents in this product can on rare occasions cause problems with white patches. We would strongly recommend that a test sample is undertaken in the same working conditions [including drying time of the base coat] before tackling a main floor.

| HD Floor Varnish | code    | 1 L    | code    | 4 L    |
|------------------|---------|--------|---------|--------|
| Dead Flat        | POL2041 | £28.74 | POL2044 | £95.20 |
| Satin            | POL2051 | £28.74 | POL2054 | £95.20 |



**Rosco Premiere Clear** An advanced waterborne polyurethane coating suitable for sealing and protecting painted finishes, scenery and floors even in high traffic areas. When cured, this clear finish provides

long-lasting durability, hardness and abrasion resistance with an environmentally-safe product. Rosco Premiere Clear is virtually odourless and may be tinted with water-based products. In addition to acting as a protective topcoat, Rosco Premiere Clear is excellent in faux finishes and tinted glaze applications. Perfect for almost any project in stage, film, and commercial areas such as arenas and museums. Covers approximately 11 m<sup>2</sup> per litre.

✓ Crystal clear finish

✓ The matt [called Flat] is very flat

✓ Durable enough for use on heavy traffic floors

✓ Good adherence - even to dance floor

✓ Brush marks fall out leaving an excellent finish

| Rosco Premiere Clear | code    | 946 ml | code    | 3.79 L |
|----------------------|---------|--------|---------|--------|
| Gloss                | ROSPCG1 | £25.25 | ROSPCG2 | £84.00 |
| Flat                 | ROSPCF1 | £25.25 | ROSPCF2 | £84.00 |
| Satin                | ROSPCS1 | £25.25 | ROSPCS2 | £84.00 |

**Making Paint with Flints Glaze**

When Flints Emulsion Glaze is used with powder pigments to make up a paint, the result will be a very tough coating difficult to scratch with a coin. Some powders are harder to mix than others. Fluorescent powders seem to be the hardest. The best way to make the paint is to use a little water to make up a thick smooth paste. Use as little water as possible or it will affect the viscosity of the paint and its ability to hold the pigment in suspension. Never try mixing powders directly with the glaze. If you are finding the powders hard to mix with the water then use our new Flints Dispersant [see below] which should solve the problem. If you don't have any Flints Dispersant to hand, you could try adding a drop of meths or washing-up liquid to break the surface tension. Scenic Powder Colours are listed on pages 24 and 27.

# WATER-BASED GLAZES

## SPECIALIST ECO GLAZES

NEW



**Earthborn Wall Glaze** For a long time the world of glazes has been devoid of a sustainable, ecologically friendly option and this glaze from Earthborn ticks many of those boxes. It's a Water based, Acrylic Free, Matt Glaze that is Ultra low VOC at 0.5g/l. Made

from Water, Cellulose, Vinegar Ester, Clay & just 0.1% Preservative. Can be diluted with water up to 1 part glaze to 3 parts water for most uses demonstrating good value. This Glaze can also be used as a binder for pigment, why not try using with our Haussmann Dry Scenic Pigments to create a sustainable paint? (Top Tip: Always mix dry pigments into a fine paste and leave preferably over night before adding to binder)

Specification: Drying Time: 1-2 Hours depending on temperature Coverage: Diluted 1:2 glaze to water 25 m<sup>2</sup>

| Wall Glaze | size   | code        | price  |
|------------|--------|-------------|--------|
|            | 750 ml | PATEBWG0750 | £31.25 |
|            | 2.5 L  | PATEBWG2500 | £91.67 |

## STANDARD WATER-BASED GLAZES

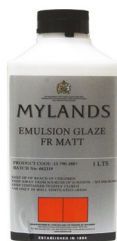


### Flints Emulsion Glaze

Flints Emulsion Glaze is different to most PVA emulsion glazes. You will find it has greater strength and durability and more water resistance.

- ✓ Reliably clear even on black
- ✓ Good gloss level from Gloss Glaze
- ✓ Low reflectance from Matt Glaze
- ✓ Apply over artwork to protect from marking
- ✓ Can be wiped down with a damp cloth
- ✓ Amazingly tough scratch resistant finish
- ✓ Excellent water resistance
- ✓ Mix with scenic paints for extra strength or eggshell effects
- ✓ Good flowing characteristics make these glazes easy to brush
- ✓ May be sprayed
- ✓ Fantastic value. Covers 15-20 m<sup>2</sup> per litre.

| Flints Emulsion Glaze | code   | 1 L    | code   | 5 L    |
|-----------------------|--------|--------|--------|--------|
| Gloss                 | PAT120 | £15.25 | PAT130 | £45.00 |
| Matt                  | PAT121 | £15.25 | PAT131 | £45.00 |



### Mylands Emulsion Glazes

Very popular glazes, excellent value. Available in matt or gloss. Always do a test area before using. Try to ensure good drying conditions to avoid any blooming. Flints sells the larger size well below the list price of £64.87 per 5 L

| Mylands FR Glaze | finish | code   | list   | price  | Tradeline 5+ |
|------------------|--------|--------|--------|--------|--------------|
| 1 L              | Gloss  | MYL120 |        | £19.98 | -            |
| 5 L              | Gloss  | MYL130 | £64.87 | £46.28 | £43.97       |
| 1 L              | Matt   | MYL121 |        | £19.98 | -            |
| 5 L              | Matt   | MYL131 | £64.87 | £46.28 | £43.97       |



Superb dead flat finish!

**Polyvine Decorators Varnish** A best-selling water-based varnish of exceptional clarity which will protect scenic artists' work both indoors and out\*. The varnish has UV filters to help prevent work from fading and will bond to emulsion, wood, latex, plaster, wallpaper, glass and non ferrous metals. It is not recommended on oil-based paints or on exterior horizontal surfaces. The dead flat finish is exceptionally flat and has minimal effect on the colour

of the base coat. All the varnishes can be tinted with Polyvine Colourisers [page 58]. Non-toxic. Covers 15 - 20 m<sup>2</sup> per litre \*Must not be used where water will collect such as sills etc. Not suitable for very exposed areas or long-term exterior use.

| Polyvine Decorators Varnish - Dead Flat | code    | price  |
|---|---------|--------|
| 500 ml                                  | POL2032 | £12.60 |
| 1 L                                     | POL2033 | £20.88 |
| 2 L                                     | POL2034 | £37.77 |
| 4 L                                     | POL2035 | £70.45 |

| Polyvine Decorators Varnish - Satin | code    | price  |
|-------------------------------------|---------|--------|
| 500 ml                              | POL2012 | £12.60 |
| 1 L                                 | POL2013 | £20.88 |
| 2 L                                 | POL2014 | £37.77 |
| 4 L                                 | POL2015 | £70.45 |

| Polyvine Decorators Varnish - Gloss | code    | price  |
|-------------------------------------|---------|--------|
| 500 ml                              | POL2022 | £12.60 |
| 1 L                                 | POL2023 | £20.88 |
| 4 L                                 | POL2025 | £70.45 |



### Rosco Clear Acrylic Glazes

Designed to be diluted 1:1 with water and applied as a surface coat but it can also be mixed into Rosco paints to increase the binder

strength and give a silk sheen. These glazes have proved themselves to be reliably clear with no tendency to bloom [when used according to instructions – see tips and advice on page 52]. For Rosco Scenic Paints see our Scenic Paints section pages 12-19. See also Rosco Crystalgel [page 47].

| Rosco Clear Acrylic Glazes | code     | 3.79 L | Tradeline 5+ |
|----------------------------|----------|--------|--------------|
| Gloss                      | ROS55801 | £52.25 | £44.49       |
| Flat                       | ROS55811 | £52.25 | £44.49       |



**Rosco Colorcoat** is a durable waterborne acrylic enamel modified to provide superior adhesion and abrasion resistance. It can be used on most interior and exterior surfaces where maximum durability is required. Not suitable on soft or flexible substrates. It is water-based, so brush cleaning is easy. Rosco recommend

Colorcoat for use on floors and scenery which endure heavy handling. Clear Colorcoat can also be used as a heavy-duty sealer over all Rosco paints. Covers 7 - 8.5 m<sup>2</sup> per litre.

| Colorcoat   | code     | 3.79L  |
|-------------|----------|--------|
| Clear Gloss | ROS35620 | £79.50 |
| Clear Satin | ROS35621 | £79.50 |



### Bristol AquaLak

Superb water-based lacquer which can either overcoat Bristol Primary Palette [pages 18-19] or can be mixed with them. When mixed with the paint it increases the durability, flexibility and the

bonding power making it suitable for painting furniture and difficult surfaces such as plastics. Many vinyl dance floors can be successfully painted with a 1:1 mix of AquaLak and paint [always try a test sample first] but it is important to remember that dancers require specific slip characteristics on their floors and painting them with any paint could affect this. For this reason we recommend it for painting dance floors used in theatre rather than dance environments. Cure time is 72 hours. For faster cure time see AquaFast below.

| Bristol AquaLak | code     | 1 L    | code     | 2.5 L  |
|-----------------|----------|--------|----------|--------|
| Matt            | BRIAQ002 | £33.64 | BRIAQ001 | £79.70 |
| Silk            | BRIAQ004 | £33.64 | BRIAQ003 | £75.96 |
| Gloss           | BRIAQ006 | £33.64 | BRIAQ005 | £75.96 |

### Bristol AquaFast

As AquaLak but a faster cure time of just 16 hours.

| Bristol AquaFast | code   | 1 L    | code   | 2.5 L  |
|------------------|--------|--------|--------|--------|
| Silk             | BRIAF1 | £35.09 | BRIAF3 | £79.70 |

### Bristol 780 Coating

**Gloss version** A clear high-gloss protective coating which offers excellent protection against the effects of weather and frequent handling. The gloss level can be reduced by diluting with water.

**Matt version** Slightly less durable than the original gloss and is not recommended for outdoor use.

| Bristol 780 Coating | Gloss   | Matt     | price   |
|---------------------|---------|----------|---------|
| 1 L                 | BRI1780 | BRI1780M | £24.86  |
| 2.5 L               | BRI3780 | BRI3780M | £56.27  |
| 5 L                 | BRI6780 | BRI6780M | £99.19  |
| 10 L                | BRI2780 | BRI2780M | £191.48 |



### Polyvine Exterior Wood Varnish

A water-based exterior grade varnish with powerful UV filters to protect your timber. We were very impressed with the quick-drying clear durable coating. Available in satin and matt [labelled dead flat]. For a matt finish, Polyvine state that 3

coats of the satin should be applied first, and sealed with a final coat of matt. However, we think that for block colours where loss of definition is not a problem, 4 coats of the matt will achieve a flatter finish, and should be OK for short-term use externally (less than 1 week). As always we recommend testing first. Contains UV filters. Covers 15 - 20 m<sup>2</sup> per litre.

| Exterior Wood Varnish | code    | 1 L    | code    | 4 L    |
|-----------------------|---------|--------|---------|--------|
| Satin                 | POL2101 | £24.52 | POL2124 | £83.60 |
| Matt                  | POL2201 | £24.52 | POL2224 | £83.60 |

## PROP-WORTHY VARNISHES



### Polyvine Heavy Duty Extreme Varnish

The Ultimate in water-based varnishes. For interior & exterior use on Brick, Stone, tile, wood, flooring, worktops, and concrete. Also provides full UV protection after 3 coats of satin finish (for dead flat follow this with extra coat of the dead flat). For

porous substrates, dilute first coat 10% with water. Ask us for full Technical Data Sheet for more information!

Specification: Coverage: 10-20 m<sup>2</sup> per litre, Drying Time: 30 - 60min, recoat after 1-2 hours, Cures in 16 hours but allow 48 hours before heavy use.

| HD Extreme Varnish | size   | code    | price  |
|--------------------|--------|---------|--------|
| Dead Flat          | 100 ml | POL2401 | £6.94  |
| Dead Flat          | 1 L    | POL2410 | £28.48 |
| Dead Flat          | 4 L    | POL2404 | £96.46 |
| Satin              | 100 ml | POL2501 | £6.94  |
| Satin              | 1 L    | POL2510 | £28.48 |
| Satin              | 4 L    | POL2504 | £96.46 |



Super high gloss finish!

### Liquitex High Gloss Varnish

The superhigh gloss finish is certainly impressive, but we think it's probably more suited to propmakers than scenic artists, or for areas where durability is key. Suitable for application over acrylic paints both interior and exterior, the coating will also protect against UV damage. Dries to a transparent, colourless and flexible finish that should not yellow. Apply in thin layers with a good quality varnishing

brush, allowing a minimum of 3 hours drying time between coats.

| Liquitex High Gloss Varnish | code      | price  |
|-----------------------------|-----------|--------|
| 946 ml [32 oz]              | PATLHG946 | £21.55 |



### Polyvine Crystal Clear Lacquer

A water-based lacquer for most surfaces, it also works well for gilded surfaces providing extra protection. It dries crystal clear with a satin or gloss finish, and is non-yellowing. Can be used inside or outside, and is food safe to boot! See also Ryland's Brass Lacquer.

| Crystal Clear Lacquer | Satin      | price  | Gloss      | price  |
|-----------------------|------------|--------|------------|--------|
| 100 ml                | POLGL0100S | £3.76  | POLGL0100G | £3.76  |
| 1 L                   | POLGL1000S | £19.56 | POLGL1000G | £19.56 |
| 4 L                   | POLGL4000S | £67.30 | POLGL4000G | £67.30 |

## METAL LACQUERS



### Rylard's Brass Lacquer (Incralac)

This brass lacquer is used in many demanding situations for protecting such metals as brass and copper, and is intended for interior or exterior use. With an excellent balance of hardness, adhesion and film toughness, it has superb resistance to UV light and resists yellowing and loss of gloss and clarity as it ages. The applied film also

provides excellent flexibility and resistance to cracking and flaking. Brushes can be cleaned with Cellulose Thinners [page 61]. See also Polyvine Crystal Clear Lacquer [page 38].

| Rylard's Brass Lacquer | size   | code     | price  |
|------------------------|--------|----------|--------|
| Can                    | 500 ml | PATBL500 | £17.85 |
| Aerosol                | 400 ml | PATBL400 | £23.29 |



**SPECIALIST SCENIC GLAZES**



**Polyvine Craquelure** A two-part water-based acrylic system which faithfully reproduces the regular crazed pattern of old porcelain glaze. The cracks can be accentuated by using the highlighter. Covers 15 m<sup>2</sup> per litre.

| Polyvine Craquelure     | code    | 500 ml   | code    | 1 L    |
|-------------------------|---------|----------|---------|--------|
| Basecoat                | POL3041 | £13.32   | POL3043 | £25.85 |
| Topcoat                 | POL3051 | £13.32   | POL3053 | £25.85 |
| Craquelure highlighters | size    | code     | price   |        |
| Dark Highlighter        | 50 g    | POL3060D | £4.75   |        |
| Light Highlighter       | 50 g    | POL3060W | £4.75   |        |



**Polyvine Crackle Glaze** A non-yellowing acrylic medium which produces consistent cracking of emulsion paint to create two-colour ageing and dramatic effects. Apply a basecoat of emulsion paint [the colour of the cracks] and allow to dry. Then apply a smooth coat of Crackle Glaze brushing in one direction only. Allow to dry. Then apply

the topcoat of emulsion paint [thinned 10% with water] brushing at right angles to the glaze using a loaded brush in one pass only. Cracks will appear in the topcoat revealing the base colour, the thicker the topcoat, the larger the cracks. Covers 15 m<sup>2</sup> per litre.

| Polyvine Crackle Glaze | size   | code    | price  |
|------------------------|--------|---------|--------|
|                        | 500 ml | POL3022 | £13.07 |
|                        | 1 L    | POL3023 | £25.38 |



**Mylands Crackle Glaze** This glaze is used for the effective reproduction of old cracked layers of paint. Apply a basecoat of emulsion paint and allow to dry. Then apply the Crackle Glaze. When the glaze is tacky but **NOT** dry apply, in one stroke, the top colour. The cracks will appear as the

glaze dries. Covers 8 - 10 m<sup>2</sup> per litre. See also Polyvine Crackle Glaze and Haussmann's Crackle Glaze the next page.

| Craquelure highlighters | size | code    | list    | price   |
|-------------------------|------|---------|---------|---------|
|                         | 1 L  | MYL3021 |         | £31.12  |
|                         | 5 L  | MYL3025 | £121.23 | £104.15 |

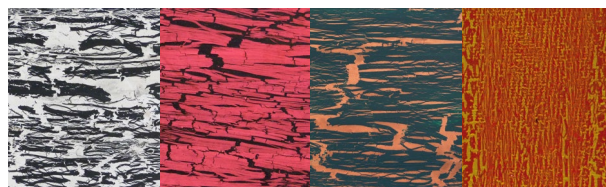
**NEW**



**Earthborn Crackle Glaze** Biodegradable Crackle Glaze that's Water Based, Oil Free & Acrylic Free. Apply the glaze between contrasting colours for dramatic crackle effect. Used in a slightly different way to acrylic crackle glazes, for this one you apply on to the

basecoat of your choice and let it dry completely before applying the top coat which will split across the surface leaving a dramatic crackle effect. You can still control the drama of the crackle by laying the glaze on thick for a wide split or thinly for a finer, craquelure effect. You could also use a heat gun to speed up the process. 9 m<sup>2</sup> per litre. These are tiny pots as it's aimed at the home furniture market, let us know if you want bigger.

| Crackle Glaze | code       | price  |
|---------------|------------|--------|
| 400 ml        | PATEBCG400 | £10.83 |



**Haussmann Crackle Glaze** This Crackle Glaze from Haussmann is worth trying; we've found that it produces a larger, more exaggerated "crack" than the Polyvine version see. The solution can be diluted by water, and in doing so will produce a finer crackle effect, the more diluted, and thinner the application, the finer the cracks. Ensure the base layer is completely dry before applying, wait for it to dry, but still be tacky, apply the top layer of paint [ensuring all brush strokes are in the same direction] which will crack immediately to reveal the base colour. We had success in testing this with HATO® Silk [page 28] as well as typical paints found in the paintshop [from page 12], so it can be used on fabrics as well as solid surfaces. SPECIFICATION: Coverage 12 m<sup>2</sup>/L.

| Haussmann Crackle Glaze | size | code       | price  |
|-------------------------|------|------------|--------|
|                         | 1 L  | PAT2334921 | £12.58 |
|                         | 5 L  | PAT2334925 | £52.00 |

**SCUMBLES FOR GLAZING AND WOODGRAINING**



**Polyvine Scumbles** A clear water-based, non-yellowing, transparent glaze which produces a translucent, waxy finish. It can be applied over acrylic eggshell paints and vinyl silk emulsion. Acrylic Scumble can be tinted using the colourisers below. Covers 15 m<sup>2</sup> per litre. If you are working

in high temperatures with low humidity, or if an extended open time is needed in order to maintain a 'wet edge' to scumble large walls, then choose Tropical Scumble which will allow for increased working time. See also Spalter Varnish Brushes [page 73].

✓ Use Tropical Scumble for increased working time with wood graining techniques or on any large areas

| Polyvine Scumbles | code     | 500 ml | code     | 1 L    | code     | 4 L    |
|-------------------|----------|--------|----------|--------|----------|--------|
| Acrylic           | POL1012  | £12.30 | POL1013  | £20.49 | POL1015  | £72.52 |
| Tropical          | POL101T2 | £12.30 | POL101T3 | £20.49 | POL101T5 | £72.52 |

**GLASS FROSTING VARNISH**



**Polyvine Glass Frosting Varnish** An acrylic medium developed to reproduce the unique visual effect of etched glass. Stencils and masking tape can be used to transform plain glass panels into classic designs. This product adheres fantastically to difficult surfaces such as projection screens, Perspex etc. and can also be used as a primer either neat or tinted with colour. Covers 15 m<sup>2</sup> per litre. .

| Glass Frosting Varnish | code    | 500 ml | 10+    |
|------------------------|---------|--------|--------|
|                        | POL3360 | £11.47 | £10.33 |

WAX FINISH VARNISH



**Polyvine Wax Finish Varnish** A unique brushable coating which offers a new concept in decorative finishing, combining the silky feel and appearance of traditional beeswax with the heat- and water-resistance of a varnish. Covers 15 – 20 m<sup>2</sup> per litre.



Polyvine Wax Finish Varnish

|             | code    | 500 ml | code    | 1 L    | code    | 4 L    |
|-------------|---------|--------|---------|--------|---------|--------|
| Clear Satin | POL3380 | £12.97 | POL3381 | £20.90 | POL3382 | £71.43 |
| Golden Pine | POL3400 | £11.34 | POL3401 | £18.27 | -       | -      |
| White       | POL3410 | £12.79 | POL3411 | £20.90 | -       | -      |



**Renaissance Wax** Specified by museums, art galleries, and restorers throughout the world. Also now widely used by interior designers as a wax wall finish. It will gently lift the grime of antiquity and old murky polishes leaving a translucent finish without obscuring surface detail and so allowing the wood or substrate to catch the light and glow. It will protect furniture from spillages including wine and will even enhance the weather resistance of metal, marble and wood used outside. Will also preserve the lustre on gilding and protect coin collections, photographs, armour, weapons and sculptures both inside and outside. Highly recommended. UN 3175

| Renaissance Wax | size   | code   | Tradeline |
|-----------------|--------|--------|-----------|
|                 | 200 ml | PAT244 | £12.95    |
|                 | 3 L    | PAT246 | £75.00    |

FIRE-RATED VARNISHES



**Bolloom Intulac Ultra** Apply two coats of the clear basecoat then overcoat after 8 hours, and before 18 hours, with the hardwearing protective coating which is available in matt or satin. SPECIFICATION: Coverage: Basecoat - a 5 L can will treat 12.5 m<sup>2</sup> to Class 0. Topcoat - a 1 L can will cover 12.5 m<sup>2</sup>. Basecoat clean up with water. Topcoat clean up with White Spirit. Go to [flints.co.uk/downloads](http://flints.co.uk/downloads) for data sheets.

| Bolloom Intulac Ultra   | code      | 500 ml | 5 L     |
|-------------------------|-----------|--------|---------|
| Clear base coat         | FLABM675B | -      | £208.98 |
| Protective coat [matt]  | FLABM675M | £44.60 | -       |
| Protective coat [satin] | FLABM675S | £44.60 | -       |

OIL-BASED VARNISHES



**Polyvine Extra Pale Dead Flat Varnish** This oil-based varnish provides a very matt finish. A unique product made with selected resins and oils to achieve an extremely pale colour. Thin with White Spirit [page 61]. Covers approx 15 m<sup>2</sup> per litre.

- ✓ Non-reflective
- ✓ Easy to apply
- ✓ Highly heat and water resistant

| Extra Pale Dead Flat Varnish | code         | price  |
|------------------------------|--------------|--------|
| 1 L                          | POLV0EPF1000 | £22.14 |



Coo-Var Polyurethane Varnish

A single-pack product of exceptional durability. Based on urethane alkyd. Ideal for doors, worktops etc. Apply by brush or spray. Surface dry in 2 hours. Through dry in 12 hours. Covers approx 14 m<sup>2</sup> per litre. Thin with White Spirit [page 61].

| Coo-Var Varnish | code    | 1 L    | 5 L            |
|-----------------|---------|--------|----------------|
| Gloss           | PATCVG1 | £13.68 | PATCVG5 £58.62 |
| Eggshell        | PATCVE1 | £18.58 | PATCVE5 £73.91 |
| Matt            | PATCVM1 | £18.41 | PATCVM5 £73.91 |

COLOURISERS



**Polyvine Colouriser** Concentrated colourfast, non-toxic pigments for colouring or tinting scumbles, varnishes, lacquer, textures, paints etc. The concentrated wood colours are perfect for realistic graining effects when mixed with scumble or glazes.

| Polyvine Colouriser | 50 g  |
|---------------------|-------|
|                     | £2.67 |

|                          |                         |  |                        |
|--------------------------|-------------------------|--|------------------------|
|                          |                         |  | Yellow<br>POL1120      |
|                          |                         |  | Crimson<br>POL1300     |
| Lemon<br>POL1310         | Yellow Oxide<br>POL1230 |  |                        |
|                          |                         |  | Magenta<br>POL1340     |
| Red<br>POL1100           | Red Oxide<br>POL1220    |  |                        |
|                          |                         |  | Ultramarine<br>POL1160 |
| Violet<br>POL1320        | Blue<br>POL1110         |  |                        |
|                          |                         |  | Green<br>POL1130       |
| Prussian Blue<br>POL1170 | Emerald<br>POL1330      |  |                        |
|                          |                         |  | Raw Sienna<br>POL1190  |
| Burnt Umber<br>POL1200   | Burnt Sienna<br>POL1180 |  |                        |
|                          |                         |  | White<br>POL1140       |
| Raw Umber<br>POL1210     | Black<br>POL1150        |  |                        |
|                          |                         |  | Mahogany<br>POL1400    |
| Antique Pine<br>POL1440  | Dark Oak<br>POL1430     |  |                        |
|                          |                         |  | Walnut<br>POL1450      |
| Medium Oak<br>POL1420    | Teak<br>POL1410         |  |                        |



# YACHT VARNISHES

## The Perfect Classic Yacht Finish

Obtaining a mirror finish requires some practice but the following notes may be of help. Sand the timber finishing along the grain with a 120 grit. Remove the dust with a vacuum cleaner. If an air blow gun is available, [ideally with a water separator] use it to blow the final dust from the grain and then clean the surface using Isopropyl Alcohol [page 61], not white spirit. On oily timbers [teak, iroko etc.] it may be necessary to remove the oils by wiping the timber with acetone frequently changing the rags. Just before applying the varnish always wipe the surface with a tack rag [page 85] to remove final traces of dust. Allow the alcohol to dry out completely before applying the first coat of varnish which should be diluted 50% with the recommended thinner or Owatrol [see below]. Avoid putting brushes directly into the varnish can, always decant into a varnish kettle to avoid contamination. Allow 24 hours to dry. Sand back gently by hand with 180 grit, clean with Isopropyl Alcohol and tack rags. Apply the second coat thinned 25%. As you apply more coats thin the varnish less and sand between with finer-grade paper. The number of coats required depends on the application. Three or four coats would be enough for indoors work and 15 - 20 coats would be needed to survive tropical sun. Generally 6 coats is considered the minimum to survive a full year in the UK. Prior to the last coat you should sand by hand using 360 - 400 grit, used wet or dry, until the varnish is completely matt and smooth to touch. Clean thoroughly before using the tack rag immediately prior to applying the varnish. Choose a warm still morning. If you have found that you are getting brush marks add 10% Owatrol to the varnish to increase the wet edge time and stir well but slowly so there are no air bubbles. Ensure you can gain access to the entire area to be varnished and that there is good light but avoid direct sunlight and wind. Apply the varnish quickly without stopping, finishing with the brush held at 45° to the stroke. Keep the wet edge flowing until the entire area is finished. If you are having difficulty maintaining a wet edge add more Owatrol. Use as big a brush as you feel you can handle.

A 3" Pro-Extra Monarch is perfect for large areas [page 73], the 30 mm Lily Varnish Brush [page 73] is good for the fiddly bits. Good quality brushes will last many years if they are thoroughly cleaned. Many people prefer to apply the varnish with a Jenny Roller while a second person lays off with a wide Jenny Foam Brush [page 74]. The Jenny Brush method is widely used by the most prestigious boatyards. A perfect finish is impossible but follow these tips and you should get pretty close. Have a look at our little video to see the results.



## Epifanes Clear Gloss Varnish

The highest quality marine varnish. This varnish is made with a long-base of 100% tung oil, combined with non-yellowing urethane and alkyd resins, blended with a perfected blend of UV filters. World famous for its high gloss retention, long-lasting properties, unique flowing characteristics and high-build capacity. Regarded by many

as the finest of all yacht varnishes. Try not to buy too big a can as the air gap will thicken the varnish. It is better to buy two small cans. Covers approximately 14 m<sup>2</sup> per litre. See also Owatrol →, and Liquitex High Gloss Varnish [page 56].

| Epifanes Clear Gloss Varnish | code   | price   |
|------------------------------|--------|---------|
| 250 ml                       | PAT390 | £11.77  |
| 500 ml                       | PAT391 | £18.97  |
| 1 L                          | PAT392 | £33.69  |
| 5 L                          | PAT393 | £155.81 |



**Epifanes Rapidclear** Superior-quality clear semi-gloss wood finish based on modified alkyd/urethane resins and UV filters. Bonds well to teak and other oily woods. Unlike conventional varnish, Rapidclear can be applied every 5 - 6 hours. Three to four coats are sufficient under most conditions. Sanding is not required between coats but if finishing with a high-gloss conventional varnish then sand with 220 grit. 750 ml will cover 10 m<sup>2</sup>.

| Epifanes Rapidclear | code   | 750 ml |
|---------------------|--------|--------|
|                     | PATRCG | £22.57 |



**Epifanes Woodfinish** Formulated for teak and oily timbers to give excellent adhesion even in tropical climates. There is no need to sand between coats yet the result is a clear hard high-gloss finish. For a matt finish, first build up with Woodfinish gloss, then apply Woodfinish Matt. Covers approximately 12 m<sup>2</sup> per litre.

| Epifanes Woodfinish | size   | code         | price  |
|---------------------|--------|--------------|--------|
| Gloss               | 500 ml | PAT397546654 | £25.22 |
| Gloss               | 1 L    | PAT397456    | £40.31 |
| Matt                | 500 ml | PAT397MATT   | £47.52 |

## Epifanes Thinner

Thinners for Epifanes varnishes.

| Epifanes Thinner | size   | code   | price  |
|------------------|--------|--------|--------|
| Brush thinner    | 500 ml | PATE24 | £11.24 |
| Brush thinner    | 1 L    | PATE14 | £13.57 |
| Spray thinner    | 1 L    | PATE15 | £15.47 |



**Deks Olje [D1 and D2]** A Norwegian saturation oil for treating wood inside or out. Pronounced 'Decks Olya'. The finish is applied wet-on-wet until the timber is saturated. It goes into the timber rather than sitting on the surface. Leaves a silken oiled look. Can be overcoated with D2 to provide a gloss finish. Coverage for D1 is approximately 1 to 1.5 m<sup>2</sup> per litres. Coverage for D2 [onto D1] is approximately 15 m<sup>2</sup> per litre.

| Deks Olje                     | code   | 1 L    |
|-------------------------------|--------|--------|
| Deks Olje D1                  | PAT078 | £29.28 |
| Deks Olje D2 [Gloss top coat] | PAT079 | £34.47 |

## OWATROL



**Owatrol** A versatile paint conditioner and rust inhibitor. When mixed with oil paint or varnish it adds extra penetration and wetting action and, usefully, it extends the wet edge time to eliminate brush marks and laps. For perfect enamel work add 5% to 10% to the paint. Once you have used Owatrol you will never want to paint without it again! Very highly recommended. It is also used widely in shipyards to effectively protect steel against corrosion. See also Terebine driers [next page].

| Owatrol | code   | 500 ml | code   | 1 L    |
|---------|--------|--------|--------|--------|
|         | PAT071 | £16.73 | PAT072 | £28.20 |

See also Floetrol paint conditioner on page 23